

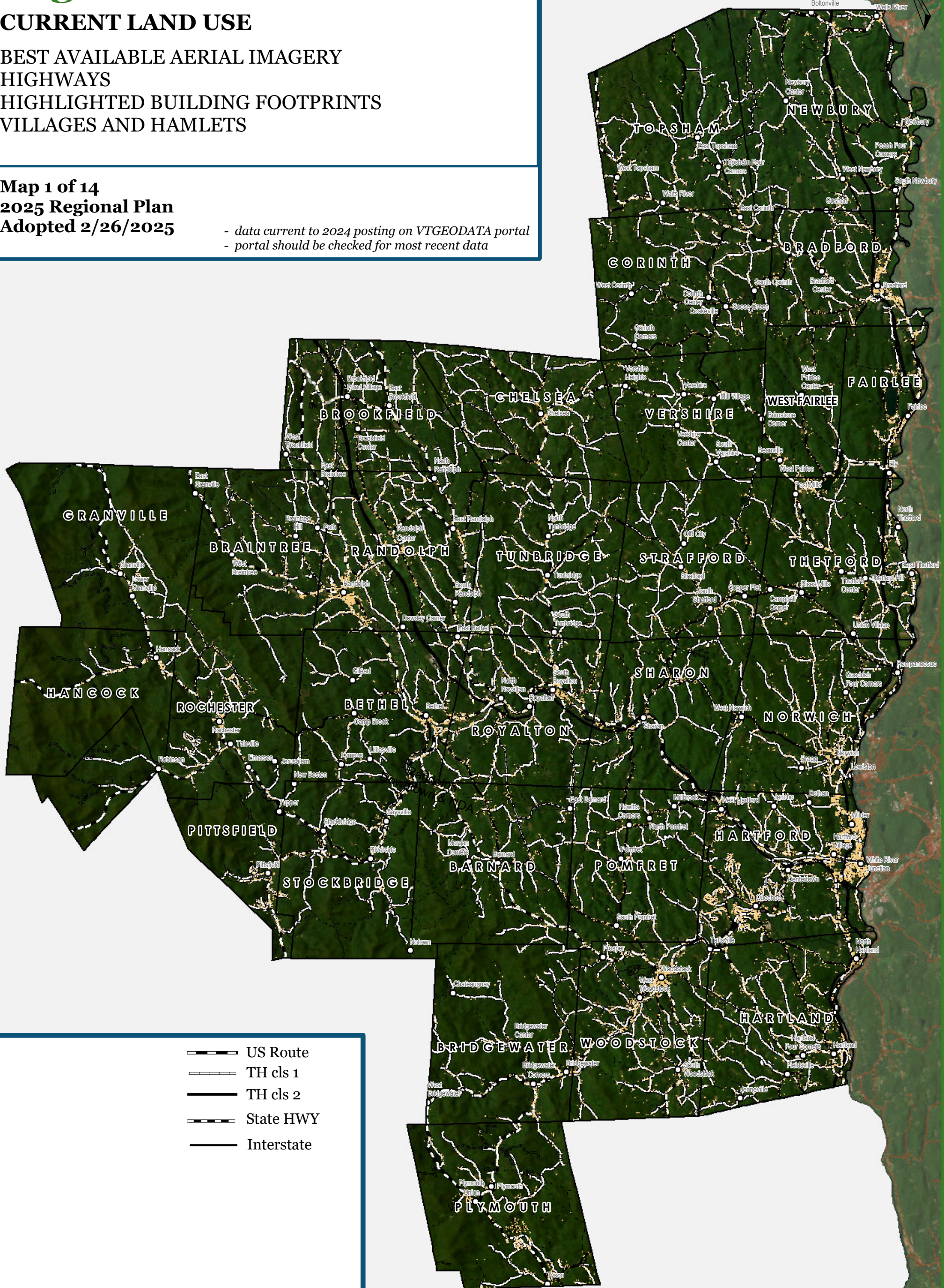
Two Rivers-Ottauquechee Region of Vermont

CURRENT LAND USE

- BEST AVAILABLE AERIAL IMAGERY
- HIGHWAYS
- HIGHLIGHTED BUILDING FOOTPRINTS
- VILLAGES AND HAMLETS

Map 1 of 14
2025 Regional Plan
Adopted 2/26/2025

- data current to 2024 posting on VTGEODATA portal
- portal should be checked for most recent data



- US Route
- TH cls 1
- TH cls 2
- State HWY
- Interstate

Building Footprints



TRORC
Two Rivers-Ottauquechee
REGIONAL COMMISSION

128 King Farm Rd. • Woodstock, VT 05091

Miles
Source: VTGEODATA

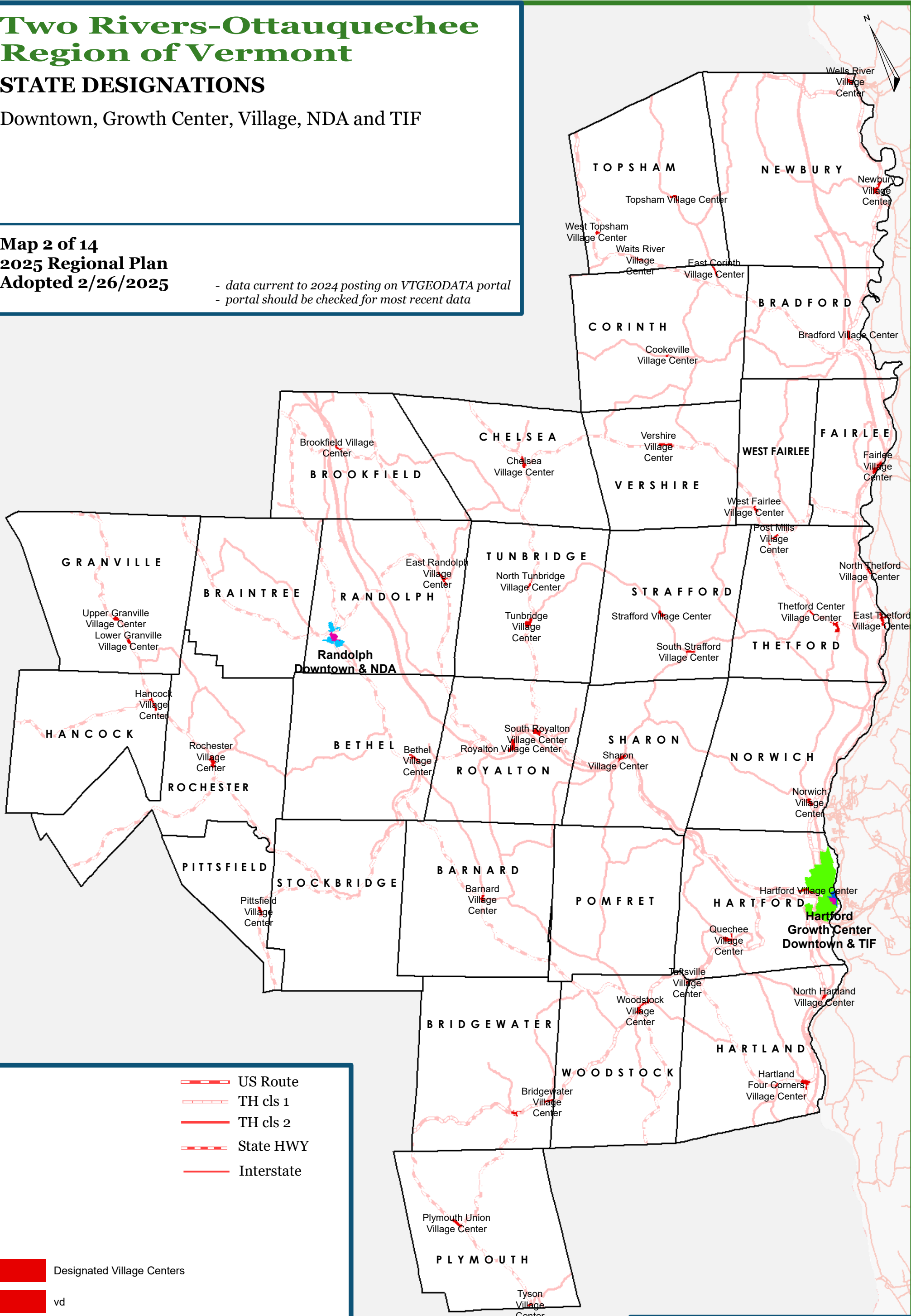
Two Rivers-Ottauquechee Region of Vermont

STATE DESIGNATIONS

Downtown, Growth Center, Village, NDA and TIF

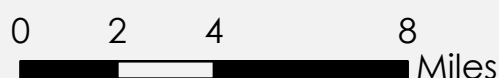
Map 2 of 14
2025 Regional Plan
Adopted 2/26/2025

- data current to 2024 posting on VTGEODATA portal
- portal should be checked for most recent data



- US Route
- TH cls 1
- TH cls 2
- State HWY
- Interstate

- Designated Village Centers
- vd
- Designated Downtown (Randolph, Hartford)
- Tax Increment Financing (TIF) Hartford
- Neighborhood Development Area (Randolph)
- Designated Growth Center (Hartford)

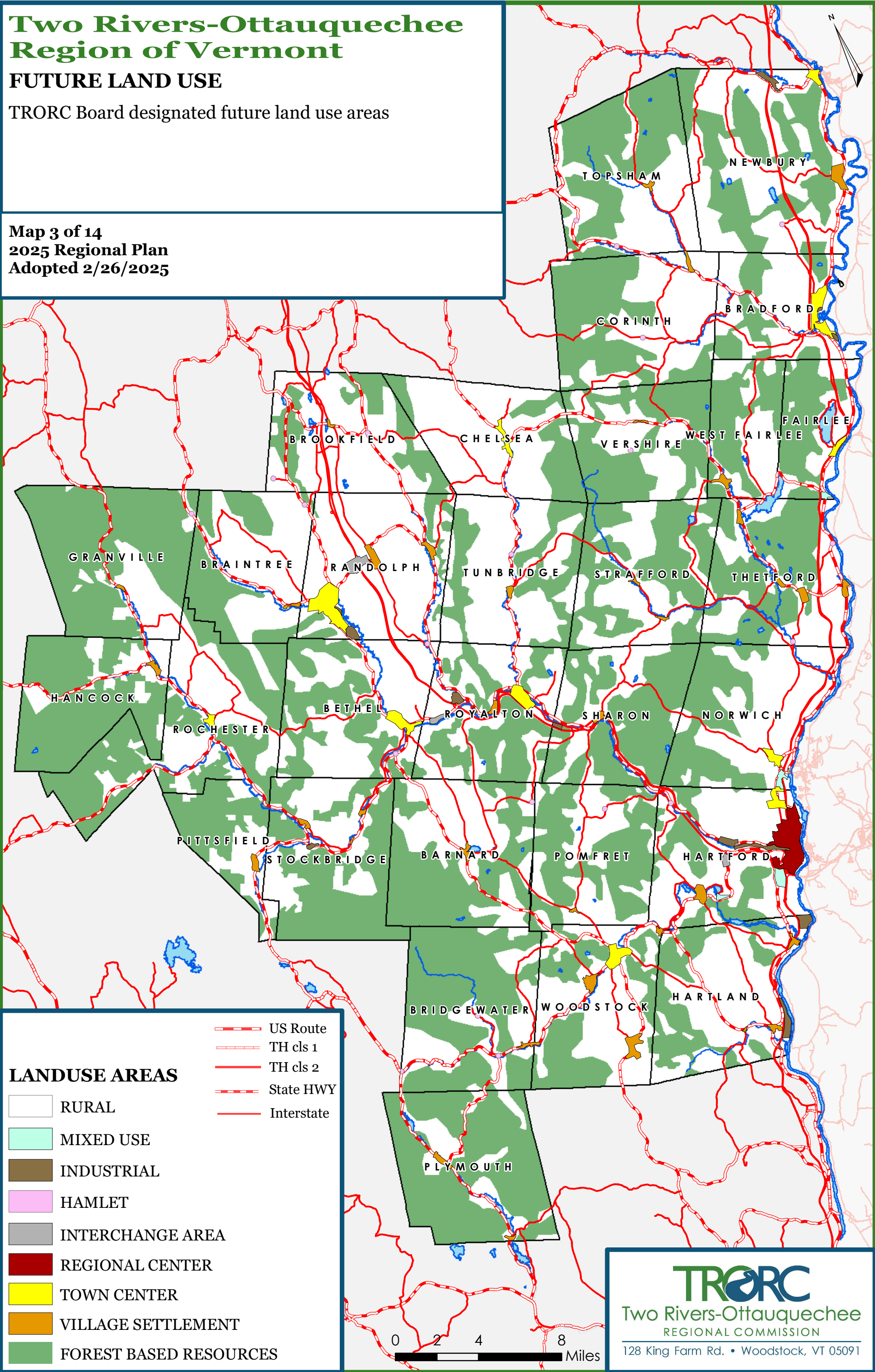


Two Rivers-Ottawaquechee Region of Vermont

FUTURE LAND USE

TRORC Board designated future land use areas

Map 3 of 14
2025 Regional Plan
Adopted 2/26/2025



LANDUSE AREAS

- RURAL
- MIXED USE
- INDUSTRIAL
- HAMLET
- INTERCHANGE AREA
- REGIONAL CENTER
- TOWN CENTER
- VILLAGE SETTLEMENT
- FOREST BASED RESOURCES

- US Route
- TH cls 1
- TH cls 2
- State HWY
- Interstate

0 2 4 8 Miles

TRORC
Two Rivers-Ottawaquechee
REGIONAL COMMISSION
128 King Farm Rd. • Woodstock, VT 05091

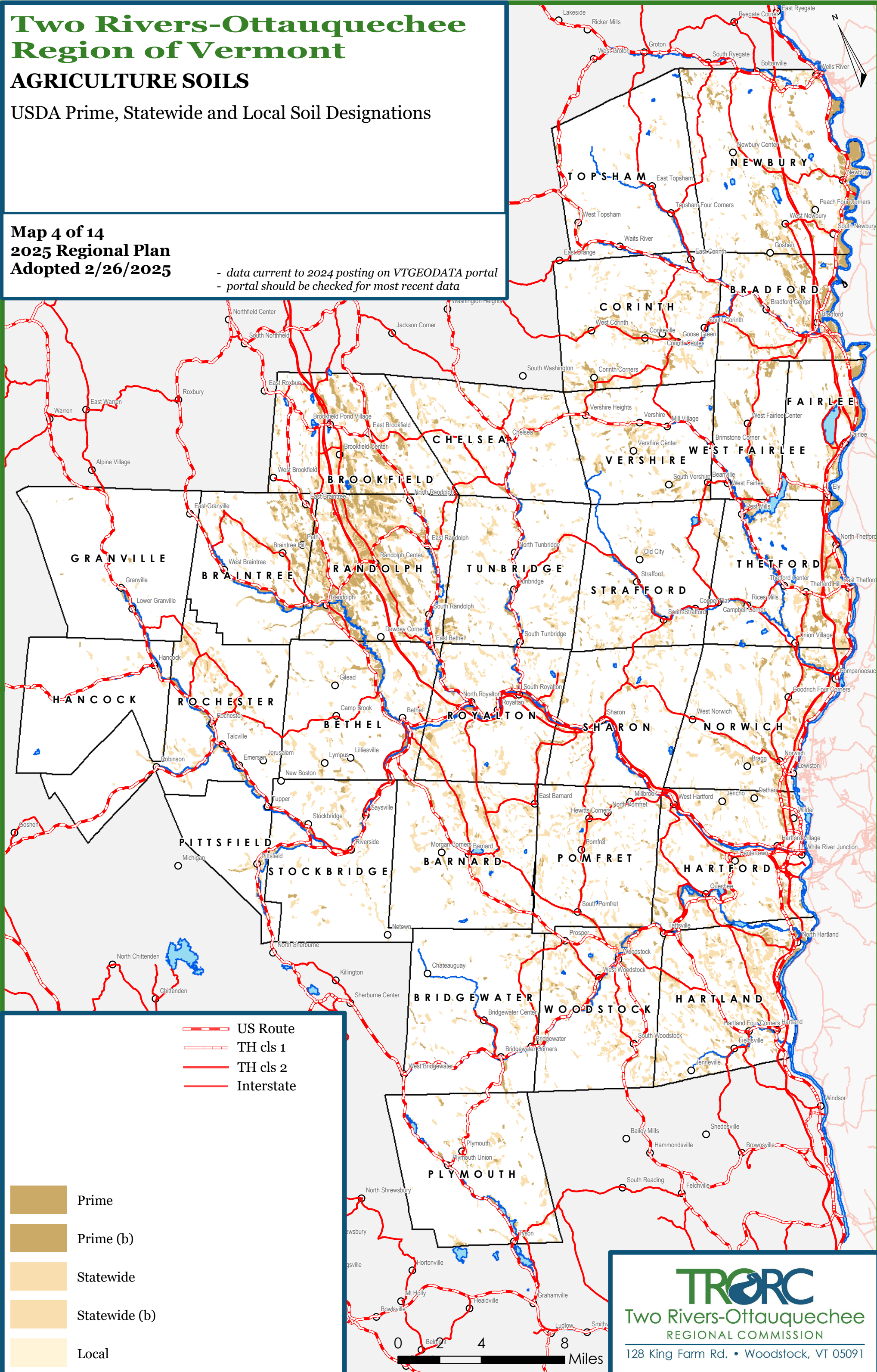
Two Rivers-Ottawaquechee Region of Vermont






AGRICULTURE SOILS

USDA Prime, Statewide and Local Soil Designations

Map 4 of 14
2025 Regional Plan
Adopted 2/26/2025

- data current to 2024 posting on VTGEODATA portal
- portal should be checked for most recent data



-  Prime
-  Prime (b)
-  Statewide
-  Statewide (b)
-  Local

TRORC
Two Rivers-Ottawaquechee
REGIONAL COMMISSION
128 King Farm Rd. • Woodstock, VT 05091

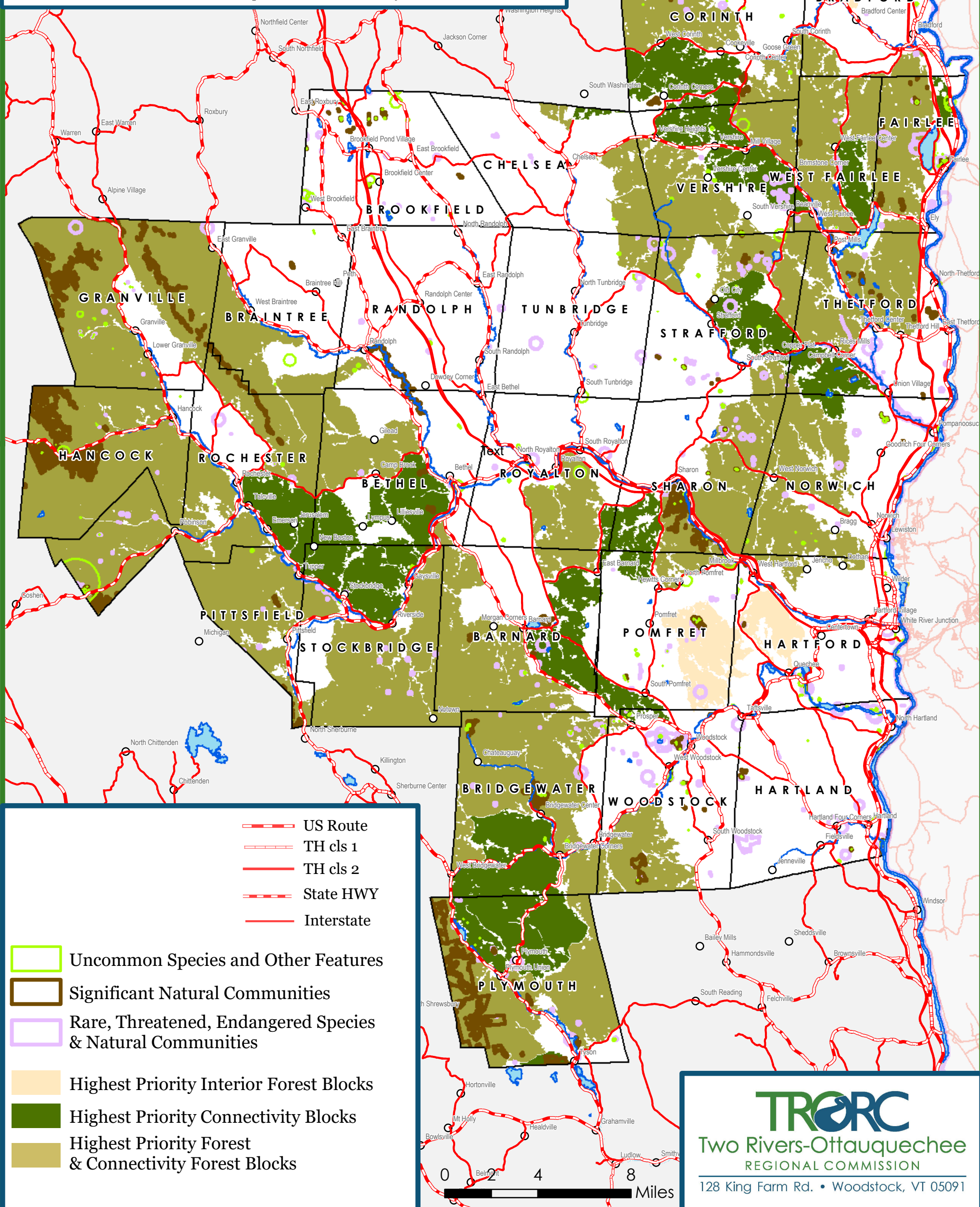
Two Rivers-Ottawaquechee Region of Vermont

NATURAL RESOURCES

- Rare, Threatened, Endangered Species & Natural Communities
- Significant Natural Communities
- Uncommon Species and Other Features
- Highest Priority Interior Forest Blocks
- Highest Priority Connectivity Blocks

Map 5 of 14
2025 Regional Plan
Adopted 2/26/2025

- data current to 2024 posting on VTGEODATA portal
- portal should be checked for most recent data



- US Route
- TH cls 1
- TH cls 2
- State HWY
- Interstate

- Uncommon Species and Other Features
- Significant Natural Communities
- Rare, Threatened, Endangered Species & Natural Communities
- Highest Priority Interior Forest Blocks
- Highest Priority Connectivity Blocks
- Highest Priority Forest & Connectivity Forest Blocks



TRORC
Two Rivers-Ottawaquechee
REGIONAL COMMISSION
128 King Farm Rd. • Woodstock, VT 05091

Two Rivers-Ottauquechee Region of Vermont

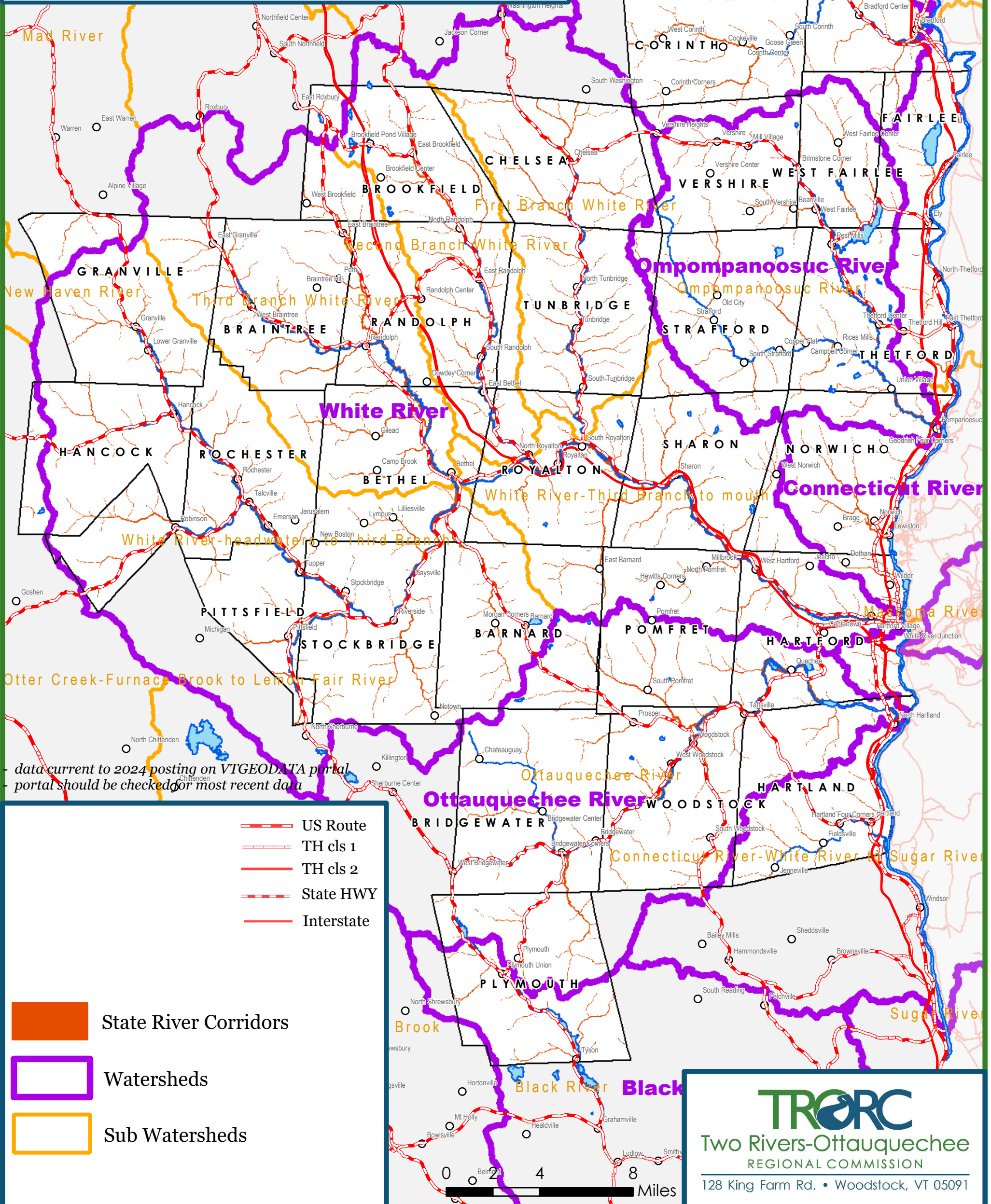
Watersheds and River Corridors

Watersheds




VT State River Corridor designations

Map 6 of 14
2025 Regional Plan
Adopted 2/26/2025

- data current to 2024 posting on VTGEODATA portal
- portal should be checked for most recent data



- data current to 2024 posting on VTGEODATA portal
- portal should be checked for most recent data

-  State River Corridors
-  Watersheds
-  Sub Watersheds

TRORC
Two Rivers-Ottauquechee
REGIONAL COMMISSION
128 King Farm Rd. • Woodstock, VT 05091



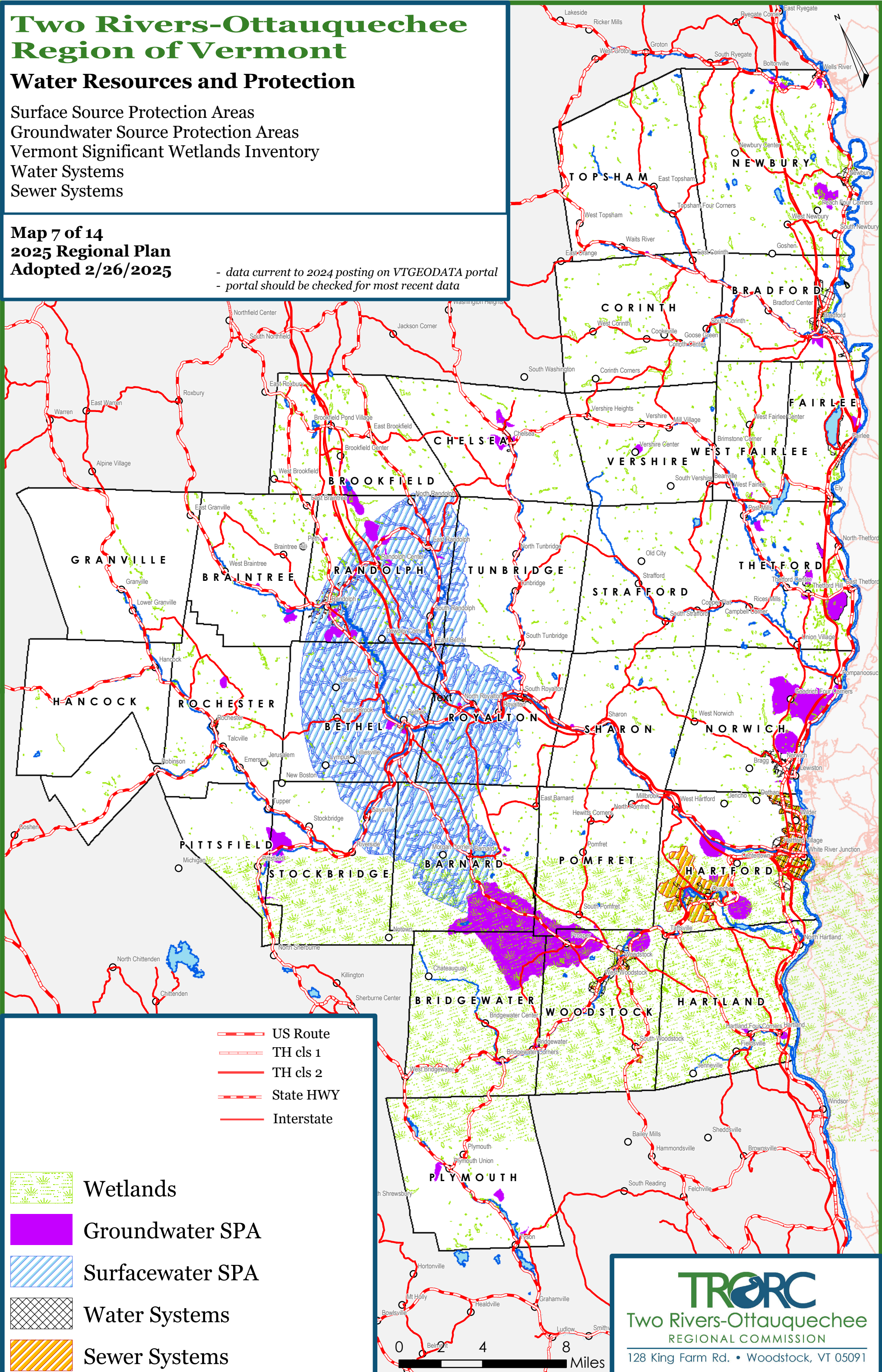
Two Rivers-Ottawaquechee Region of Vermont

Water Resources and Protection

- Surface Source Protection Areas
- Groundwater Source Protection Areas
- Vermont Significant Wetlands Inventory
- Water Systems
- Sewer Systems

Map 7 of 14
2025 Regional Plan
Adopted 2/26/2025

- data current to 2024 posting on VTGEODATA portal
 - portal should be checked for most recent data



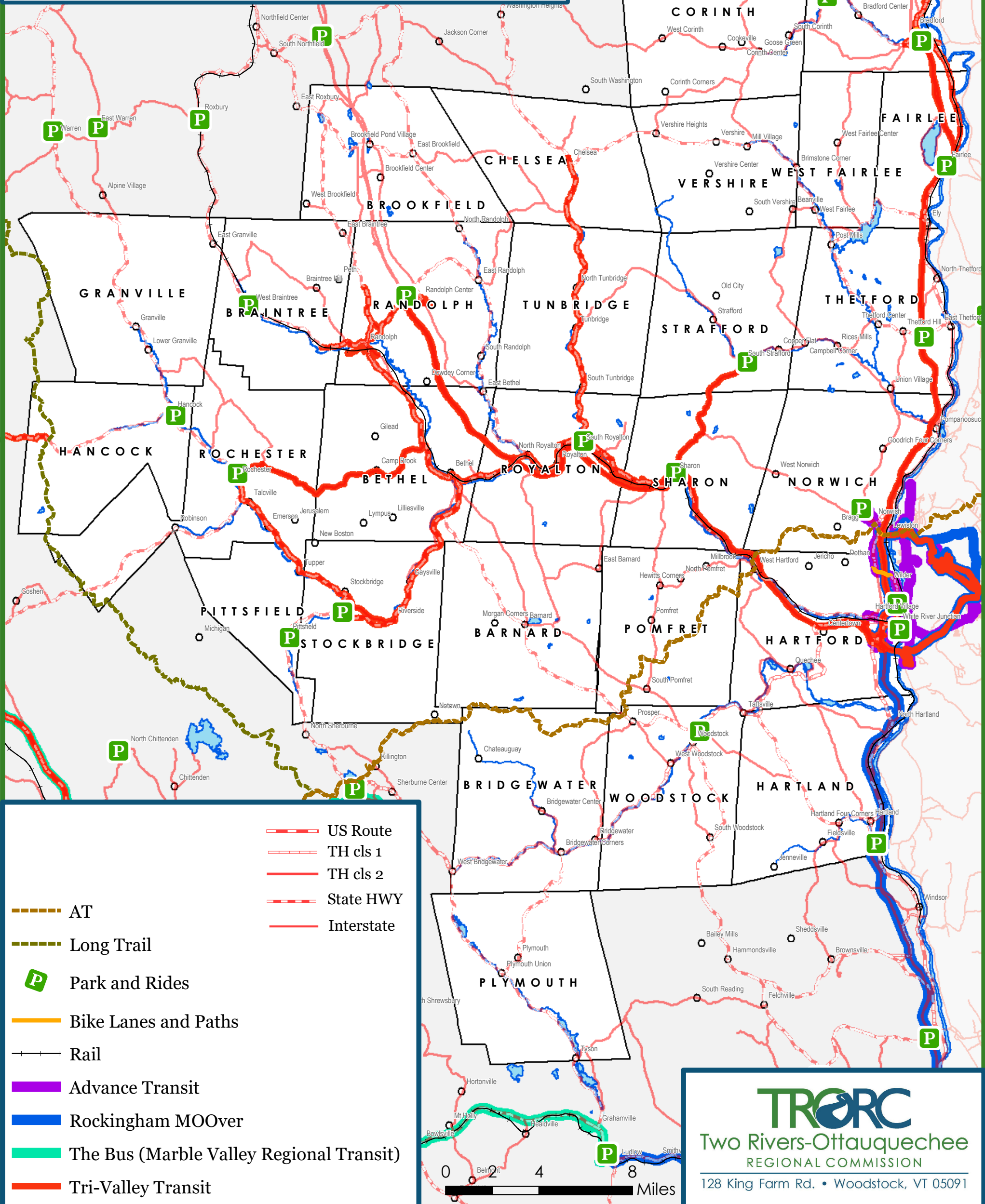
Two Rivers-Ottauquechee Region of Vermont

Regionally Significant Transportation Facilities

- Park and Rides
- Transit Providers & Rail
- AT and Long Trails
- Bike Lanes and Paths
- Federal & State Highway Systems

Map 8 of 14
2025 Regional Plan
Adopted 2/26/2025

- data current to 2024 posting on VTGEODATA portal
 - portal should be checked for most recent data



TRORC
 Two Rivers-Ottauquechee
 REGIONAL COMMISSION
 128 King Farm Rd. • Woodstock, VT 05091

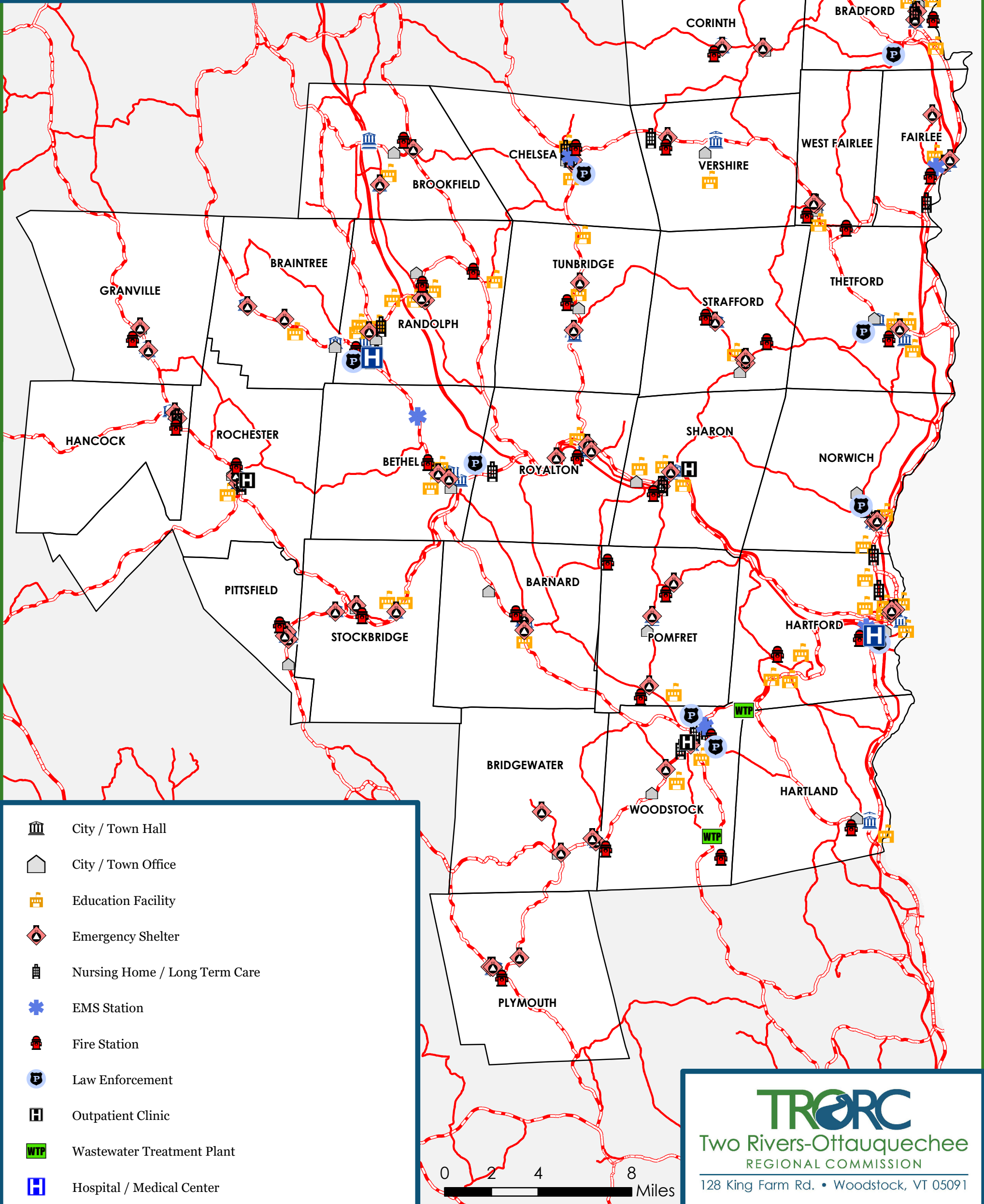
Two Rivers-Ottauquechee Region of Vermont

Regional Facilities

- Municipal Facilities and WWTF
- EOC/Shelters
- Fire/EMS Services
- Police Stations
- Hospitals and Clinics

Map 9 of 14
 2025 Regional Plan
 Adopted 2/26/2025

- data current to 2024 posting on VTGEODATA portal
 - portal should be checked for most recent data



- City / Town Hall
- City / Town Office
- Education Facility
- Emergency Shelter
- Nursing Home / Long Term Care
- EMS Station
- Fire Station
- Law Enforcement
- Outpatient Clinic
- Wastewater Treatment Plant
- Hospital / Medical Center

0 2 4 8 Miles

TRORC
 Two Rivers-Ottauquechee
 REGIONAL COMMISSION
 128 King Farm Rd. • Woodstock, VT 05091

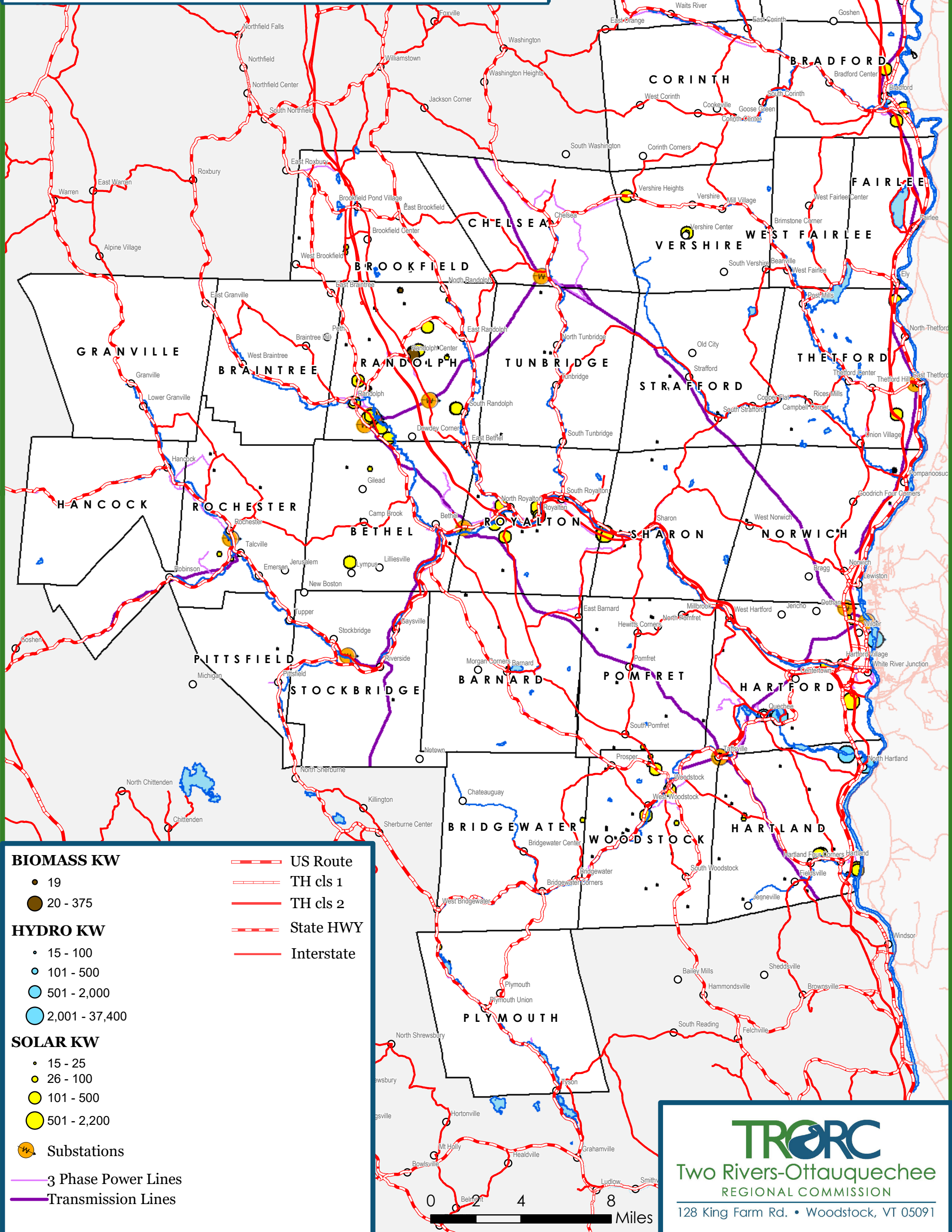
Two Rivers-Ottauquechee Region of Vermont

Existing Energy Generation

Biomass, Hydroelectric, Solar, Substations, 3-Phase Power Lines, and Transmission Lines

Map 10 of 14
2025 Regional Plan
Adopted 2/26/2025

- data current to 2024 posting on VTGEODATA portal
- portal should be checked for most recent data



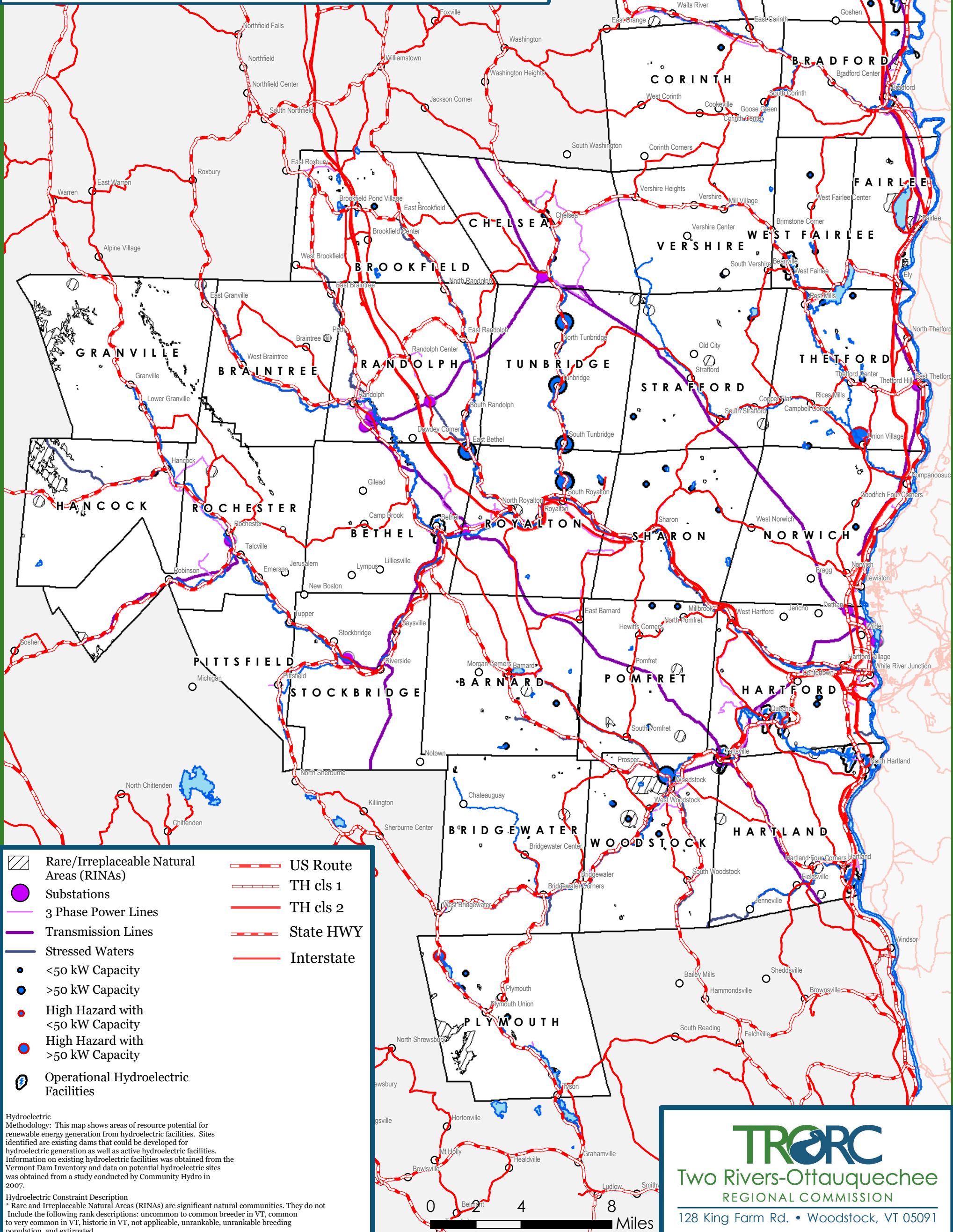
Two Rivers-Ottawaquechee Region of Vermont

Hydroelectric Energy Potential

Operational Hydroelectric Facilities & Potential Hydroelectric Facilities

Map 11 of 14
2025 Regional Plan
Adopted 2/26/2025

- data current to 2024 posting on VTGEODATA portal
- portal should be checked for most recent data



Hydroelectric Methodology: This map shows areas of resource potential for renewable energy generation from hydroelectric facilities. Sites identified are existing dams that could be developed for hydroelectric generation as well as active hydroelectric facilities. Information on existing hydroelectric facilities was obtained from the Vermont Dam Inventory and data on potential hydroelectric sites was obtained from a study conducted by Community Hydro in 2007.

Hydroelectric Constraint Description
* Rare and Irreplaceable Natural Areas (RINAs) are significant natural communities. They do not include the following rank descriptions: uncommon to common breeder in VT, common to very common in VT, historic in VT, not applicable, unrankable, unrankable breeding population, and extirpated.

TRORC
Two Rivers-Ottawaquechee
REGIONAL COMMISSION
128 King Farm Rd. • Woodstock, VT 05091

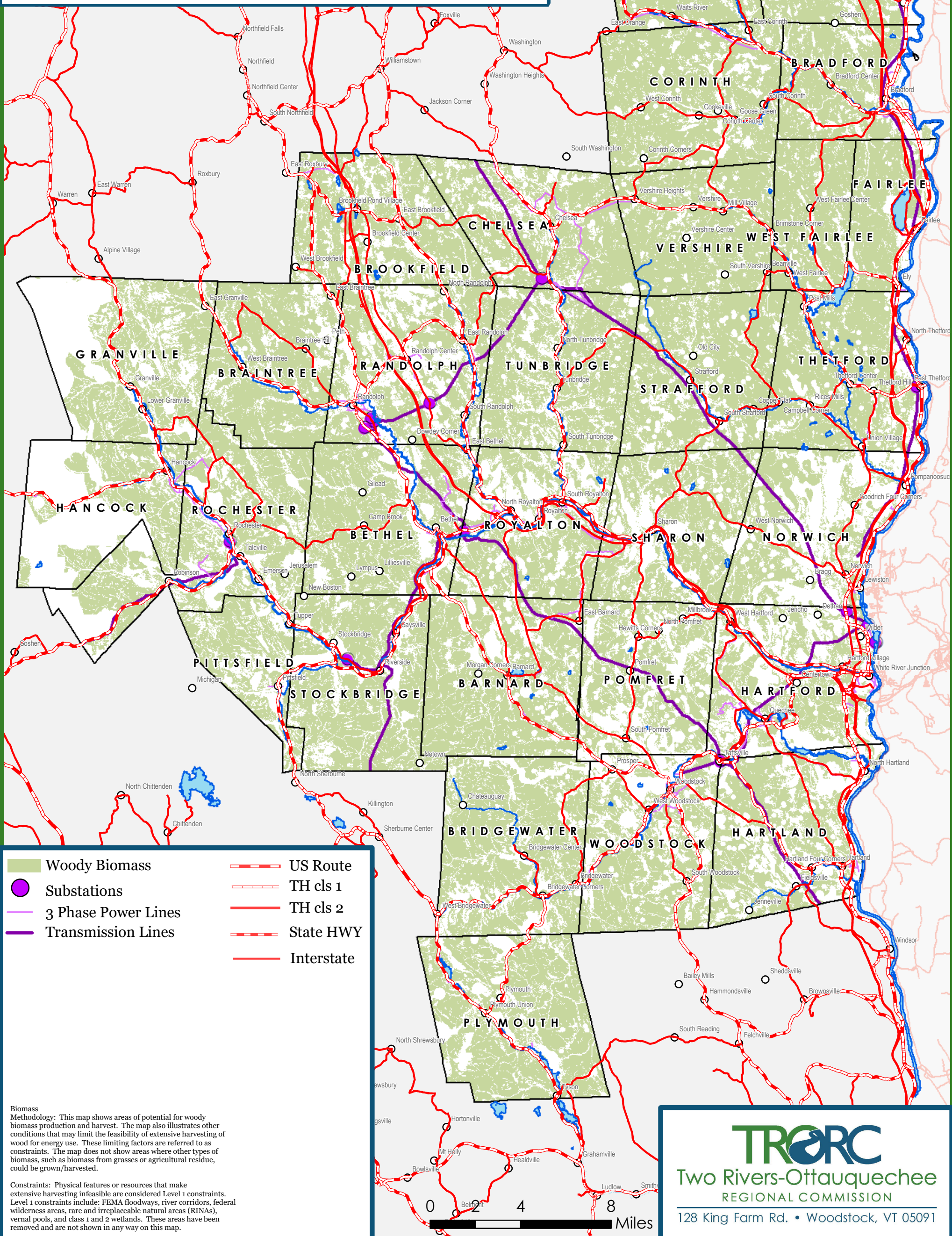
Two Rivers-Ottauquechee Region of Vermont

Biomass Energy Potential

Woody Biomass

Map 12 of 14
2025 Regional Plan
Adopted 2/26/2025

- data current to 2024 posting on VTGEODATA portal
- portal should be checked for most recent data



Biomass Methodology: This map shows areas of potential for woody biomass production and harvest. The map also illustrates other conditions that may limit the feasibility of extensive harvesting of wood for energy use. These limiting factors are referred to as constraints. The map does not show areas where other types of biomass, such as biomass from grasses or agricultural residue, could be grown/harvested.

Constraints: Physical features or resources that make extensive harvesting infeasible are considered Level 1 constraints. Level 1 constraints include: FEMA floodways, river corridors, federal wilderness areas, rare and irreplaceable natural areas (RINAs), vernal pools, and class 1 and 2 wetlands. These areas have been removed and are not shown in any way on this map.

TRORC
Two Rivers-Ottauquechee
REGIONAL COMMISSION
128 King Farm Rd. • Woodstock, VT 05091

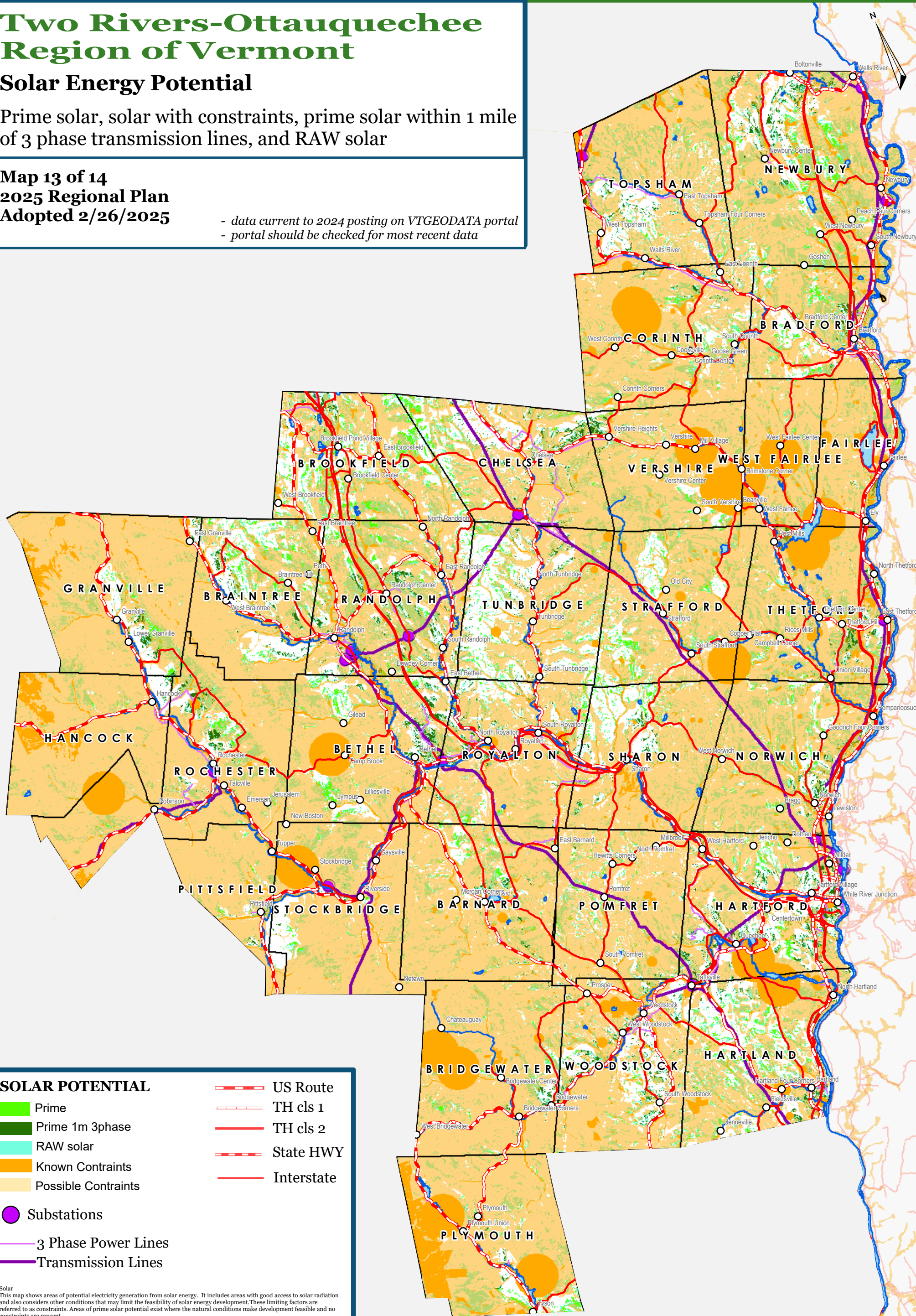
Two Rivers-Ottauquechee Region of Vermont

Solar Energy Potential

Prime solar, solar with constraints, prime solar within 1 mile of 3 phase transmission lines, and RAW solar

Map 13 of 14
2025 Regional Plan
Adopted 2/26/2025

- data current to 2024 posting on VTGEODATA portal
- portal should be checked for most recent data



SOLAR POTENTIAL

- Prime
- Prime 1m 3phase
- RAW solar
- Known Constraints
- Possible Constraints

- US Route
- TH cls 1
- TH cls 2
- State HWY
- Interstate

- Substations
- 3 Phase Power Lines
- Transmission Lines

Solar
This map shows areas of potential electricity generation from solar energy. It includes areas with good access to solar radiation and also considers other conditions that may limit the feasibility of solar energy development. These limiting factors are referred to as constraints. Areas of prime solar potential exist where the natural conditions make development feasible and no constraints are present.

DARK GREEN Prime: No Constraints within 1 mile 3 phase power
GREEN Prime: No Constraints no known or possible constraints present
ORANGE Constraints no known but at least one or more possible constraints
BLUE GREEN Raw potential with constraints

Known Constraints
Vernal Pools (confirmed and unconfirmed layers), DEC River Corridors, FEMA Floodways, State-significant Natural Communities and Rare, Threatened, and Endangered Species
Wilderness Areas, including National Wilderness Areas, Class 1 and Class 2 Wetlands (VSWI and advisory layers)

Possible Constraints
Agricultural Soils (VT Agriculturally Important Soil Units), FEMA Special Flood Hazard Areas, Protected Lands (Updated 07/26/2016), Act 250 Agricultural Soil Mitigation areas, Deer Wintering Areas
ANR's Vermont Conservation Design Highest Priority Forest Block Datasets, Forest Blocks - Connectivity, Forest Blocks - Interior Forest Blocks - Physical Land Division, Hydric Soils

TRORC Unsuitable areas (included in known constraints)
FEMA Floodways, Wilderness Areas, including National Wilderness Areas
Class 1 Wetland



TRORC
Two Rivers-Ottauquechee
REGIONAL COMMISSION

128 King Farm Rd. • Woodstock, VT 05091

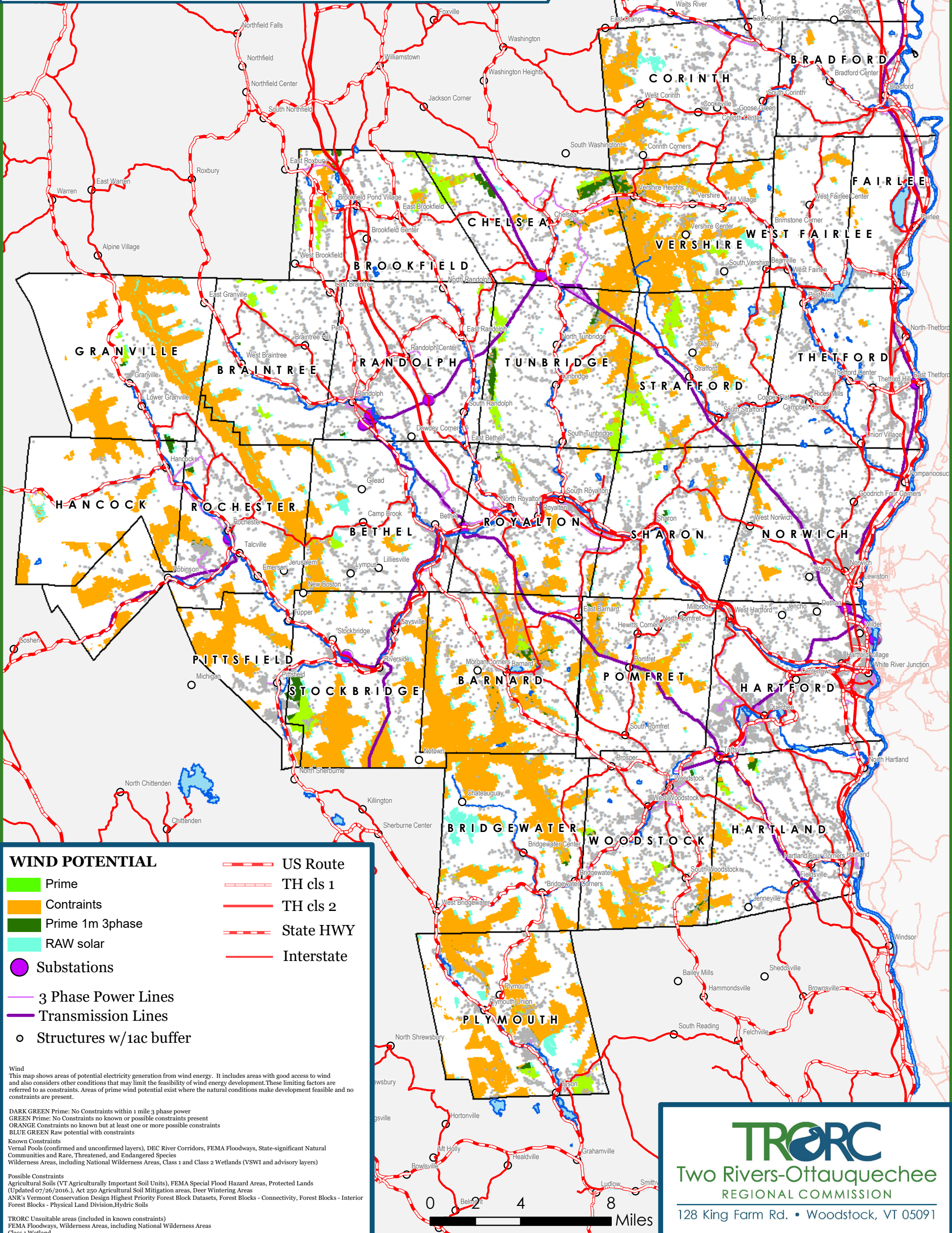
Two Rivers-Ottauquechee Region of Vermont

Wind Energy Potential

Prime wind, wind with constraints, prime wind within 1 mile of 3 phase transmission lines, and RAW wind

Map 14 of 14
2025 Regional Plan
Adopted 2/26/2025

- data current to 2024 posting on VTGEODATA portal
- portal should be checked for most recent data



WIND POTENTIAL

- Prime
- Constraints
- Prime 1m 3phase
- RAW solar
- Substations
- 3 Phase Power Lines
- Transmission Lines
- Structures w/1ac buffer

- US Route
- TH cls 1
- TH cls 2
- State HWY
- Interstate

Wind
This map shows areas of potential electricity generation from wind energy. It includes areas with good access to wind and also considers other conditions that may limit the feasibility of wind energy development. These limiting factors are referred to as constraints. Areas of prime wind potential exist where the natural conditions make development feasible and no constraints are present.

DARK GREEN Prime: No Constraints within 1 mile 3 phase power
GREEN Prime: No Constraints no known or possible constraints present
ORANGE Constraints no known but at least one or more possible constraints
BLUE GREEN Raw potential with constraints

Known Constraints
Vernal Pools (confirmed and unconfirmed layers), DEC River Corridors, FEMA Floodways, State-significant Natural Communities and Rare, Threatened, and Endangered Species
Wilderness Areas, including National Wilderness Areas, Class 1 and Class 2 Wetlands (VSWI and advisory layers)

Possible Constraints
Agricultural Soils (VT Agriculturally Important Soil Units), FEMA Special Flood Hazard Areas, Protected Lands (Updated 07/26/2016), Act 250 Agricultural Soil Mitigation areas, Deer Wintering Areas
ANR's Vermont Conservation Design Highest Priority Forest Block Datasets, Forest Blocks - Connectivity, Forest Blocks - Interior Forest Blocks - Physical Land Division, Hydric Soils

TRORC Unsuitable areas (included in known constraints)
FEMA Floodways, Wilderness Areas, including National Wilderness Areas
Class 1 Wetland

TRORC
Two Rivers-Ottauquechee
REGIONAL COMMISSION

128 King Farm Rd. • Woodstock, VT 05091

